



# interWORKS

solutions for **Multi-Specialty Groups**

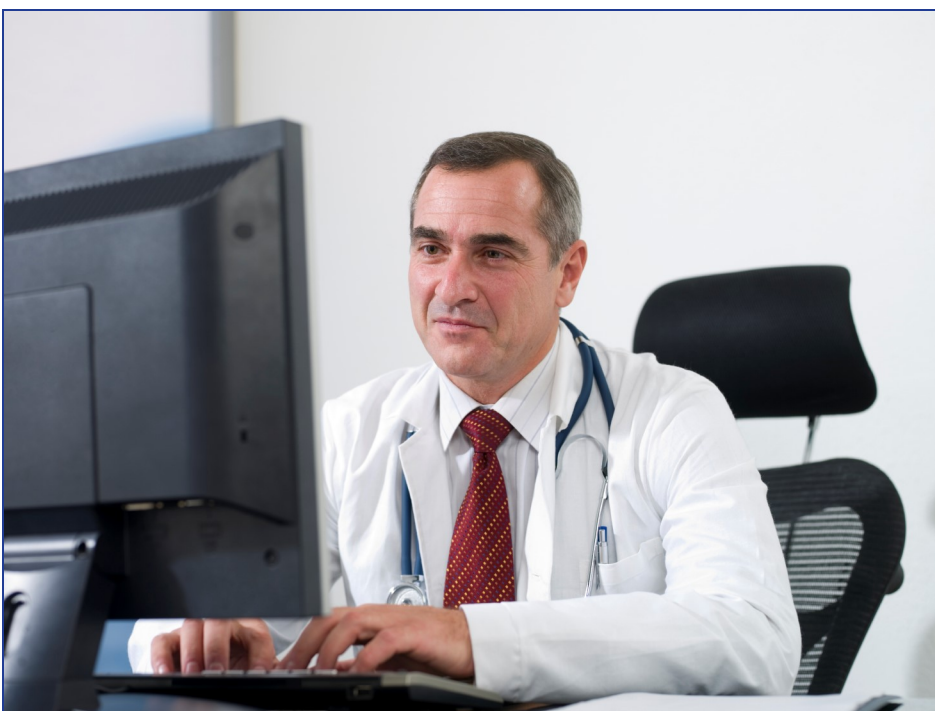
## Does Your PACS Create Unnecessary Roadblocks?

By design, multi-specialty groups bring together a broad range of healthcare disciplines to support the best interest of the patient. However, when these groups connect the myriad of software systems needed to support their practice, it can result in a maze of complicated interfaces, which frustrate physicians and staff by forcing them to juggle multiple software applications to complete their responsibilities. By implementing

interWORKS PACS+, multi-specialty groups can accept orders from practice management/EHR systems to provide a seamless flow of information between your enterprise EHR. With this design, healthcare professionals can live within the software application most relevant to their duties and return their focus to providing excellent patient care.

## *Radiology Workflow Solutions*

because RIS/PACS is not enough



## What Do I Need to Know?

**Our organization uses a radiology group to provide interpretation for specific studies. Can you send these studies to their PACS?**

Yes. A technologist can send these studies as needed to your radiology reading group. In addition, your radiology group can read remotely from interWORKS PACS+ if needed.

**Can interWORKS PACS+ receive orders from my Practice Management/EHR?**

Yes. To maximize workflow efficiency, interWORKS PACS+ can receive orders from your practice management/EHR system via HL7. Our visual DayPlanner then displays these orders to help technologists manage their schedule within a single application.

**Data Tracking is very important to maximize throughput and efficiency. Do you include statistical reports?**

Yes. With interWORKS PACS+ Analysis Reporting, your organization can identify trends and respond with actionable changes. Analysis Reporting includes a library of extensive management and system reports. You can also create and share reports with other healthcare professionals based on security rights.

# interWORKS solutions for

## Multi-Specialty Groups

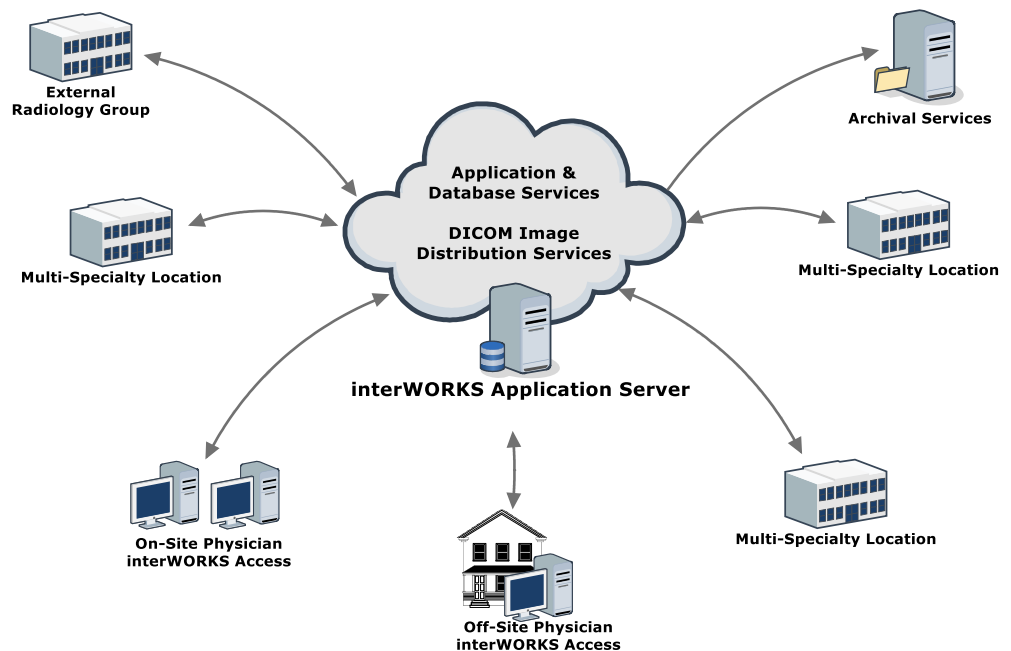
### Recommended Configuration

- interWORKS PACS+
- interWORKS PACS+ VM hosted in your organization's data center. This option requires Avreo approved VMWare or HyperV virtual guest on your organization's hardware.

### Why interWORKS PACS+?

- Easily accepts radiology orders from your practice management/EHR system to minimize impact on your scheduling workflow.
- Thoughtful workflow management via status-driven web-based worklists provide access to studies and orders based on each healthcare professional's activities.
- Includes quality assurance tools for technologists to review image quality before submitting a study to the radiologist or physician for review.
- WAN optimized, web-based image and reporting access to ensure all healthcare professionals can do their job regardless of location.
- Flexible interpretation options via digital dictation/transcription with configurable placeholder and normal templates as well as optional subscription with embedded Avreo Cloud VR powered by Nuance. Optional integration with other third party VR systems including PowerScribe 360 and M\*Modal Fluency also available.
- Minimal maintenance requirements as all software deploys from a central server, which eliminates the need to upgrade individual workstations. In addition, interWORKS PACS+ does not use Java, ActiveX, or other third party utilities that you must maintain on individual computers throughout your environment.

### interWORKS PACS+ Excels in Distributed Environments while Effectively Managing Workflow




### Let's Start a Conversation!

We want to discuss the current challenges that you are facing so we can fully understand the needs of your organization and offer solutions to alleviate these issues.

#### To Learn More

 [www.avreo.com](http://www.avreo.com)

 1-866-286-8082

 Demonstrations

