



interWORKS

solutions for **Rural Health**

Is Your PACS Optimized for Your Rural Health Enterprise?

Rural hospitals and healthcare providers represent a critical component of the nation's healthcare system. However, highly distributed workflow, poor Internet bandwidth, and chronically low reimbursement represent a subset of the unique challenges these providers face in delivering healthcare. Rural hospitals need a solution that cohesively connects their radiology department to radiologists and ordering physicians

regardless of location without the common maintenance pitfalls that add stress to overloaded IT staff.

Avreo interWORKS is designed as a WAN optimized PACS that deploys easily via a simple web address to authorized healthcare personnel. Its zero-impact installation that deploys without Java, ActiveX, or other utilities ensures simple, low maintenance access throughout your distributed network.

Radiology Workflow Solutions

because RIS/PACS is not enough



What Do I Need to Know?

Our radiologist is on site only a few days per week. Can the radiologist use this system to access imaging information remotely?

Yes. The WAN optimized, web-based connectivity within interWORKS ensures that radiologists, administrators, technologists, and healthcare professionals can securely and efficiently perform workflow driven tasks and access needed information regardless of location. Optimizations and configurations can further assist in delivering images over areas with poor bandwidth.

Our organization uses a radiology group to provide interpretation for specific studies. Can you send these studies to their PACS?

Yes. A technologist can send these studies as needed to your radiology reading group. In addition, your radiology group can read remotely from interWORKS if needed.

Our budget is limited. Is this expensive?

Avreo provides a variety of flexible licensing options to meet your budget.

Can interWORKS provide access to images and reports from my EHR?

Yes. interWORKS has several methods to accomplish this depending on the capabilities of your EHR. If ordering physicians do not have access to your EHR, interWORKS includes a referring physician portal so authorized individuals can access needed radiology information.

interWORKS *solutions for*

Rural Hospitals

Recommended Configuration

- interWORKS
- interWORKS VM hosted in your organization's data center. This option requires Avreo approved VMWare or HyperV virtual guest on your organization's hardware.

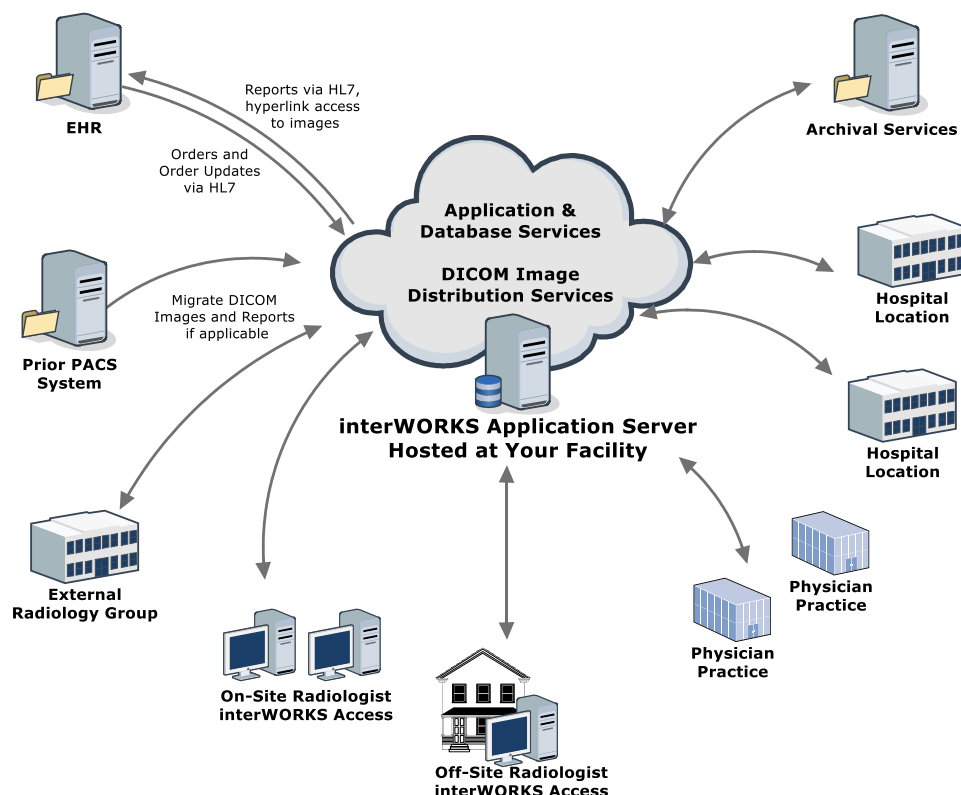
Why interWORKS?

- Easily accept radiology orders from your enterprise EHR to minimize impact on your scheduling workflow.
- Includes quality assurance tools for technologists to review image quality and order accuracy before submitting a study to the interpreting physician for review.
- Empower radiologists to read virtually anywhere. interWORKS offers WAN optimized, web-based image and reporting access to ensure all healthcare professionals can do their job regardless of location.
- Ensure your organization maintains ownership of radiology content. While it may seem easy to store your radiology images in a PACS hosted by another organization, it can be easy to lose control and ownership of your images over time.

Proven Quality Over Time

Your healthcare organization makes a commitment to your patients to provide high quality medical care in a safe and welcoming environment. We would like the opportunity to demonstrate this same level of excellence and commitment to your healthcare organization.

Easily Access Radiology Images and Reports Throughout Your Enterprise



Let's Start a Conversation!

We want to discuss the current challenges that you are facing so we can fully understand the needs of your organization and offer solutions to alleviate these issues.

To Learn More



www.avreo.com



1-866-286-8082



Demonstrations

